

# BUILDING FOR TOMORROW...TODAY

## DOUBLE YOUR DONATION

Starting October 19, 2020

Any donation to an open endowment fund will be matched dollar for dollar by the Beautiful Plains Community Foundation to a total of \$50,000 between all funds

Make a donation to the BPCF online at

[www.endowmanitoba.ca](http://www.endowmanitoba.ca)

or by cheque at the BPCF Office at 487 Walker Ave.



## Fuel Good Day



Thank you to Neepawa - Gladstone Co-op for donating Fuel Good Day proceeds of \$2,697.72 to BPCF

## Endow Manitoba Giving Challenge

November 9-15, 2020

### Giving Challenge November 9 – 15, 2020

Donate \$5 and your donation becomes \$7, thanks to support from The Winnipeg Foundation and the Manitoba Government.

Donate online at [www.endowmanitoba.ca](http://www.endowmanitoba.ca) or please make cheques payable to the Beautiful Plains Community Foundation or BPCF

## DONOR SPOTLIGHT

### NEEPAWA FARMERS

Neepawa Farmers established a designated endowment fund to maintain and improve the Neepawa Baseball-Softball Association Facility. Enjoy baseball or softball, donate today to grow this fund.



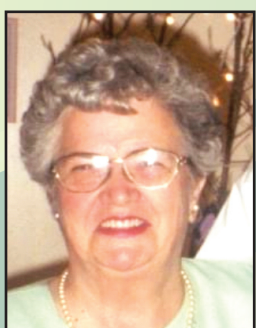
**1993 Neepawa Farmers Baseball Team**  
Back Row (L-R) Jim White, Bob Birch, Cory Hylhorst, Richard Nicolson, Shane Moffatt, Don Schmall, Lawson Davie, Warren Yerex, Andy Boehm.  
Front Row (L-R) Garth White, Troy Mutch, Kori Pearson, Mike Levandosky, Merv Bohn, James Heapy, BJ Birch

**1997 Neepawa Farmers Baseball Team**  
Back Row (L-R) Jim White, Bryce Birch, Andy Boehm, Al Hicks, Grant Spraggs, Tom Maines, Kevin Wilson, Derrek McGorman, Gorey Bulaney, Mike Levandosky.  
Front Row (L-R) Vince Eastman, Dean McBride, Troy Mutch, Kori Pearson, Ryan Scott, Dan Denff, Bryan White, Garth White



## In memoriam

BPCF says farewell to these community-minded individuals who recently passed away and chose to have donations made in their memory support the BPCF.



Susan Drayson



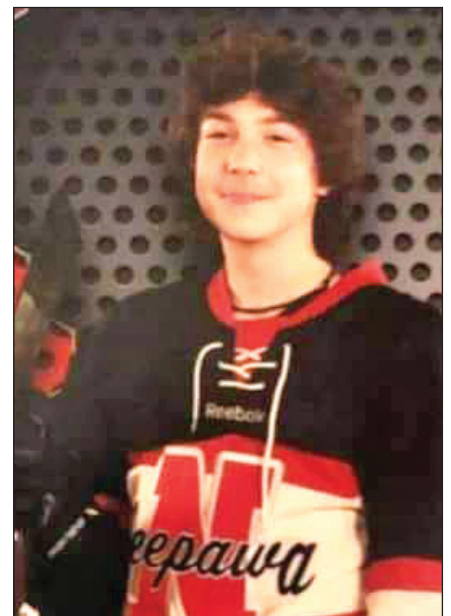
Dorothy Babcock



Keegan Airey

## BPCF - Keegan Airey Memorial Fund for Youth Sports

The family of Keegan have created this fund to leave a lasting legacy in Keegan's honour, to encourage and support participation in youth sports. Donate today to grow this fund!



## What is the Beautiful Plains Community Foundation?

The Beautiful Plains Community Foundation (BPCF) is a non-profit organization whose goal is to preserve and advance the quality of life in the community. Individual donations are pooled and invested and a portion of the interest is given out in annual grants— your original donation is never spent. Each year, the Foundation distributes grants to organizations in the Town of Neepawa, the Village of Brookdale, Rural Municipalities of Rosedale and Glenella-Lansdowne and the Langford area of North Cypress-Langford.

**2020-2021 Board: President-Brent Sorenson, Vice President-Keith Jury, Treasurer-Ian Thomson, Ann Kuharski, Karen McDonald, Ashley McCaughan, Marilyn Crewe, Mark Morehouse, Jack Falk, Brad Walker and Jeff Miner.**



BEAUTIFUL PLAINS  
COMMUNITY FOUNDATION INC

Box 486, 487 Walker Ave.  
Neepawa, MB,  
R0J 1H0  
phone: 204-476-2681  
[info@beautifulplainscf.ca](mailto:info@beautifulplainscf.ca)  
[www.beautifulplainscf.ca](http://www.beautifulplainscf.ca)